



Section 5: Strengthen Infrastructure, Facilities, and Services

Ho 'omoe wai kahi ke kao 'o.
Let all travel together like water flowing in one direction.
'Ōlelo no'eau, 1102

Section 5 prioritizes improvements in infrastructure, facilities, and services, including:

- Water system improvements in Ocean View, Nā'ālehu, Wai'ōhinu, Pāhala, and for existing Hawaiian farmsteads in the South Point area (Section 5.2)
- Road and streetscape improvements (Section 5.3), including Wood Valley Road and bridges, Kamā'oa Road, Ka'alu'alu Road, South Point Road, and highway improvements
- Alternate routes connecting Kapāpala, Wood Valley, Pāhala, and Nā'ālehu as well as Green Sands and Mark Twain (Section 5.4)
- Mass transit routes and shelters (Section 5.5)
- Emergency and health services and facilities (Sections 5.6 and 5.7), including fire and police stations, fire trucks, ambulances, sirens, helipads, an Ocean View shelter, police officers, and hazard mitigation plans
- Environmental management facilities (Section 5.8), including expanded sewer lines, the Ocean View transfer station, green waste facilities, and improvements in the Pāhala transfer station
- Educational and library facilities and programs (Section 5.9)
- Park facilities and services in each community and along the coast (Section 5.10).



5.1 Coordinate Infrastructure, Facility, and Service Improvements

This section of the CDP guides the coordination of regional infrastructure improvements.

5.1.1 Community Objective

- Objective 7: **Identify viable sites for critical community infrastructure**, including water, emergency services and educational facilities to serve both youth and adults.

5.1.2 Land Use Policies

Policy Controls

See **Policy 1 on page 38, Policy 3 on page 39, Policy 4 on page 39, and Policy 5 on page 39.**

5.1.3 County Action

Policy 89 Implement capital improvement priorities in Ka'ū.

Current capital improvement priorities for Ka'ū include:

- Water system improvements (see Policy 93 on page 74)
- Road improvements (see Policy 95 on page 75, Policy 96 on page 75, Policy 97 on page 75, Policy 98 on page 75, Policy 99 on page 75, Policy 100 on page 75, and Policy 103 on page 77)
- Emergency services and facilities (see Section 5.6.2 on page 79)
- Wood Valley Road bridge replacement (see Policy 104 on page 77)
- Environmental management facilities (see Section 5.8.2 on page 81)
- Park facilities (see Policy 88 on page 70 and Section 5.10.2 on page 83)
- Regional trail development (see Section 4.9.3 on page 69)
- Streetscape improvements (see Policy 78 on page 66).

Policy 90 Implement protocols for receiving community input at meetings in Ka'ū during capital project siting and design. Consult with and solicit input from community members with generational knowledge to minimize the impact of proposed changes to the use of land on cultural practices, cultural sites, and culturally significant areas, including burials.

Policy 91 Provide technical support to communities and organizations pursuing capital improvement financing through USDA Rural Development, infrastructure improvement financing districts, and other sources.

Policy 92 Support use of the Air National Guard Innovative Readiness Training (ANG IRT) program in the development of infrastructure programs and projects.



5.1.4 Advocacy

5.1.4.1 *Department of Accounting and General Services, State of Hawai'i and US Postal Service*

- Improve the Nā'ālehu Civic Center, including additional parking and building updates.

5.1.5 Community-Based, Collaborative Action

Community Action 15: Actively advocate for CIP appropriations, financing, allotments, and encumbrances that support implementation of the CDP.



Nā'ālehu

5.2 Improve Water Infrastructure

This section of the CDP prioritizes the improvement of existing potable water systems to support infill growth.

5.2.1 Community Objective

- Objective 7: **Identify viable sites for critical community infrastructure**, including **water**, emergency services and educational facilities to serve both youth and adults.

5.2.2 County Action

Policy 93 Water system improvements shall correlate with the County’s desired land use development pattern. (GP 11.2.2(a))

Importantly, County water distribution systems shall not be extended outside the growth boundary defined in the Ka’ū CDP Land Use Policies and Policy Map, with the exception of water designated specifically for and limited to agricultural irrigation and livestock.

Implementation of this policy is supported by several existing policies and capital projects appropriated by the County Council:

- Continue to evaluate growth conditions to coordinate improvements as required to the existing water systems in Nā’ālehu, Wai’ōhinu, and Pāhala. (GP 11.2.4.8.2(a, c)) The focus shall be on improvements to existing systems to support infill growth within the CDP growth boundary.
- Pursue groundwater source investigation, exploration, and well development at Ocean View, Pāhala, and Wai’ōhinu. (GP 11.2.4.8.2(b))
- Improve the water system in Ocean View, including improved water quality with, for example, enhanced filtration systems, the development of a backup source, and, if possible, additional pumping capacity and service to the commercial areas. (Ocean View Business District Water Infrastructure Improvements, Ordinance 12-152)
- Support Department of Hawaiian Home Lands (DHHL) efforts to increase the availability of water to existing lots in the South Point area. (South Point Road Water Infrastructure Expansion Project, Ordinance 12-87)

See Policy 138 on page 88.

5.2.3 Advocacy

5.2.3.1 Department of Hawaiian Homelands (DHHL)

- Collaborate with the Department of Water Supply to implement the DHHL Regional Plan for Ka’ū by increasing capacity of the South Point water system to accommodate existing lots.

5.2.4 Community-Based, Collaborative Action

See Community Action 15 on page 73.



5.3 Enhance the Roadway Network

This section of the CDP maintains road connectivity, prioritizes flood prevention and road improvements, and guides road improvements in Mark Twain and Green Sands subdivisions.

5.3.1 Community Objective

- Objective 8: **Establish a rural transportation network**, including roadway alternatives to Highway 11, a regional trail system, and an interconnected transit system.

5.3.2 Land Use Policy

Policy Control

Policy 94 All subdivision in the Ka'ū CDP planning area, including condominium property regimes (CPRs) and planned unit developments (PUDs), should conform to connectivity standards in HCC 23-28, 29, and 40 of the Hawai'i County Code.

5.3.3 County Action

Policy 95 Install culverts and construct drainage channels and other related improvements as necessary to prevent flooding of roadways and other areas. (GP 13.2.5.9.2(b))

Policy 96 Improve safety along Kamā'oa Road, Ka'alu'alu Road through Green Sands, and South Point Road from Highway 11 to Kamā'oa Road.

Policy 97 Improve safety on Wood Valley Road, possibly including posted speed limits, lane markers, and stop signs.

Policy 98 Make intersection improvements at Pikake, Koali, and Wood Valley Roads.

Policy 99 Prioritize the maintenance of County roads, including street lights, street signs, and mowing.

Policy 100 Continue to maintain "roads-in-limbo" in coordination with the Department of Hawaiian Homelands and shoreline public access plans.

Policy 101 Remove the Nā'ālehu bypass from the General Plan transportation map.

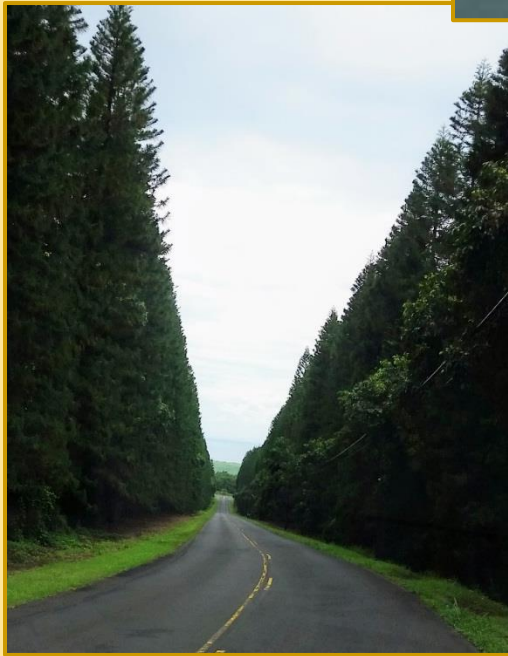
5.3.4 Advocacy

5.3.4.1 Department of Transportation

- Continue to improve Māmalahoa Highway, realigning where necessary and prioritizing shoulder safety (particularly for bicyclists), including on the stretch of highway between Honu'apo and the Ka'ū Police Station. (GP 13.2.5.9.2(a))
- Implement Bike Plan Hawai'i.
- When implementing the Statewide Pedestrian Master Plan in Nā'ālehu (Project H3), address community concerns about the preservation of the trees and stone walls along the highway.

5.3.5 Community-Based, Collaborative Action

Community Action 16: In Mark Twain and Green Sands subdivisions, establish a community development corporation (CDC) to develop and maintain roads and Green Sands Park.





5.4 Formalize Alternative Routes

This section of the CDP prioritizes formalizing and improving emergency alternative routes.

5.4.1 Community Objective

- Objective 8: **Establish a rural transportation network**, including **roadway alternatives** to Highway 11, a regional trail system, and an interconnected transit system.

5.4.2 County Action

Policy 102 Formalize emergency alternative routes through Kapāpala Ranch between the highway and Wood Valley Road.

Policy 103 Secure improvement easements along Ka'alāiki Road. Ka'alāiki Road will continue to be used as a minor, rural street for local traffic and as an alternate route to Highway 11 as needed, so it will require safety improvements.

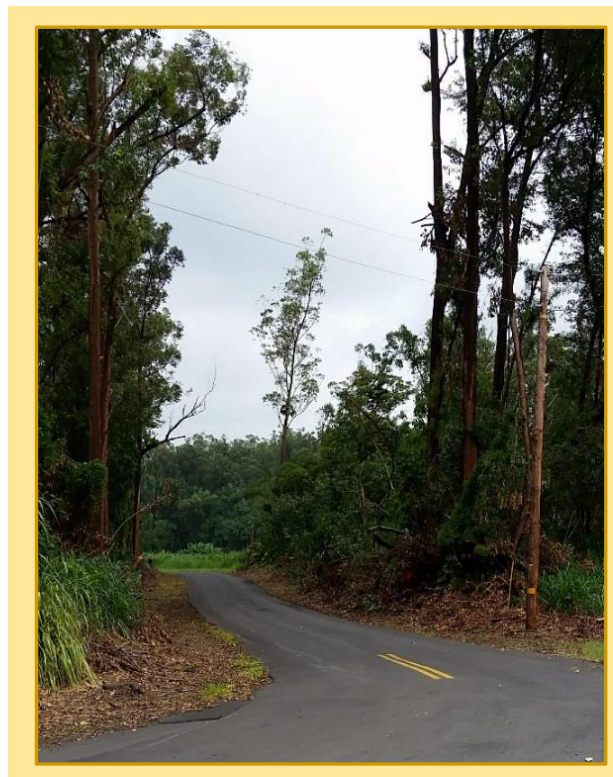
Policy 104 Replace Wood Valley Road bridges.

Policy 105 Establish an emergency alternative route connecting Green Sands and Mark Twain subdivisions.

See Policy 118 on page 80.

5.4.3 Community-Based, Collaborative Action

See Community Action 15 on page 73.



5.5 Expand Mass Transit Facilities and Services

This section of the CDP prioritizes bus system improvements, including a Ka'ū loop route, an Ocean View route, evening trips to Hilo and Kona, and bus shelters.

5.5.1 Community Objective

- Objective 8: **Establish a rural transportation network**, including roadway alternatives to Highway 11, a regional trail system, and **an interconnected transit system**.

5.5.2 County Action

Policy 106 Establish an intra-district bus loop route that circulates among and within all Ka'ū communities.

Policy 107 Provide bus routes for evening trips to Hilo and Kona.

Policy 108 Provide bus shelters in Nā'ālehu, Wai'ōhinu, Discovery Harbour, and Ocean View.

Policy 109 Establish a bus route that circulates within Ocean View.



Discovery Harbour



5.6 Strengthen Emergency and Health Facilities

This section of the CDP prioritizes new fire stations, upgraded emergency equipment, police station improvements, a new police substation in Ocean View, civil defense warning systems, and the hardening of other critical emergency infrastructure.

5.6.1 Community Objective

- Objective 7: **Identify viable sites for critical community infrastructure**, including water, **emergency services** and educational facilities to serve both youth and adults.

5.6.2 County Action

See Section 5.4.2 on page 77.

Policy 110 The number and location of emergency services facilities and personnel in Ka‘ū shall be based on the population to be served and response time. (GP 10.3.2(e))

Policy 111 Address the backlog of facilities improvements in Ka‘ū (GP 10.3.4.8.2(a)), including:

- Build a new fire station in Nā‘ālehu (Ordinance 12-87), Pāhala, and Ocean View, in that order of priority.
- Upgrade trucks, ambulances, and other equipment for fire crews.
- Make improvements in the Nā‘ālehu Police Station, including repairs, hardening, hazardous materials abatement, energy efficiency, and ADA. (Ordinances 11-60 & 12-150)
- Build a new Ocean View Police Substation. (Ordinance 14-082)

Policy 112 Harden critical infrastructure to ensure its effective use after an earthquake, eruption, and/or hurricane, including the Ocean View Fire Station, the Pāhala Fire Station, the Ka‘ū Police Station Generator Building, and the Ka‘ū Police Station (Nā‘ālehu Police Station).

Policy 113 Build the Kahuku Park Community/Senior Center, Gym, and Shelter. (Ordinance 12-87)

Policy 114 Ensure adequate placement and maintenance of civil defense warning systems.

Policy 115 Establish a helipad to support the provision of emergency services in Ka‘ū.

5.6.3 Advocacy

5.6.3.1 Hawai‘i Health Systems Corporation

- Harden the Ka‘ū Hospital to ensure its effective use after an earthquake and/or hurricane.
- Expand facilities and services to communities throughout the Ka‘ū district.

5.6.4 Community-Based, Collaborative Action

See Community Action 15 on page 73.

5.7 Expand Emergency Services

This section of the CDP prioritizes four police officers on each shift, hazard mitigation plans, and the expansion of Neighborhood Watch and CERT programs.

5.7.1 Community Objective

- Objective 7: **Identify viable sites for critical community infrastructure**, including water, **emergency services** and educational facilities to serve both youth and adults.

5.7.2 County Action

Policy 116 Ensure adequate police protection by maintaining at least four police officers on duty each shift in the Ka'ū District.

Policy 117 Actively expand the Neighborhood Watch and CERT programs. (GP 10.3.2(g))

Policy 118 In collaboration with residents, develop and adopt a hazard mitigation plan for each community in Ka'ū, including an evacuation clearance rate and evacuation plans and routes. (GP 13.2.5.9.2(d))

Policy 119 Implement the Ka'ū Community Wildfire Protection Plan.

5.7.3 Advocacy

5.7.3.1 *Hawai'i Volcanoes National Park and Hawai'i Volcano Observatory (USGS)*

- Work with the County of Hawai'i Civil Defense Agency on emergency response planning and implementation for natural disasters, such as seismic or eruptive events.

5.7.4 Community-Based, Collaborative Action

See Community Action 15 on page 73.

Community Action 17: Grow existing Neighborhood Watch and CERT teams, and develop new ones.



Hawaiian Ocean View Estates



5.8 Improve Environmental Management Facilities

This section of the CDP prioritizes expanded wastewater systems, the new transfer station in Ocean View, improvements to the recycling area in Pāhala, and green waste drop-off and mulch pick-up sites.

5.8.1 Community Objective

- Objective 7: **Identify viable sites for critical community infrastructure**, including water, emergency services and educational facilities to serve both youth and adults.

5.8.2 County Action

Policy 120 Extend the primary wastewater collection lines in Pāhala and Nā'ālehu so that infill development projects can connect wastewater systems built for new subdivisions to the County systems.

Policy 121 Build the solid waste transfer station in Ocean View. (GP 10.5.4.8.2(a))

Policy 122 Implement plans to improve the recycling area at the Pāhala Transfer Station.

Policy 123 In consultation with residents, farmers, and vector control experts, add green waste drop-off and mulch pick-up sites in Ka'ū, with strict control of invasive species, pests, and disease.

5.8.3 Advocacy

5.8.3.1 Department of Health

- Rather than universally prohibit cesspools, establish place-specific policies based on analysis of local environmental conditions.
- Make an affordable financing mechanism available for cesspool-to-septic conversions.

5.8.4 Community-Based, Collaborative Action

See Community Action 15 on page 73.

5.9 Strengthen and Expand Education Facilities and Services

This section of the CDP prioritizes and guides the development of a school and library in Ocean View as well as improvements in educational and library facilities throughout the district.

5.9.1 Community Objective

- Objective 7: **Identify viable sites for critical community infrastructure**, including water, emergency services and **educational facilities** to serve both youth and adults.

5.9.2 County Action

Policy 124 Support the development of charter and other public schools in Hawaiian Ocean View Estates subdivision, including on County-owned parcels.

5.9.3 Advocacy

5.9.3.1 State Legislature

- Appropriate funding for a K-8 school in Ocean View.

5.9.3.2 Department of Education

- Continually improve existing educational facilities. (GP 10.2.4.6.2(a))
- Plan a K-8 School at Ocean View. (GP 10.2.4.6.2(b))
- Continually improve educational opportunities in Ka'ū, including the diversity of course offerings, additional qualified staff, and expanded extra-curricular activities.
- Support the development of charter schools in Ka'ū.

5.9.3.3 State Libraries

- Establish a library branch in Ocean View.
- Continually improve library facilities, services, and inventory in Ka'ū.
- Establish joint community-school library facilities, where a separate community library may not be feasible, in proximity to other community facilities. (GP 10.2.2(c))

5.9.3.4 Department of Education, University of Hawai'i, Office of Hawaiian Affairs, and Kamehameha Schools

- Collaborate to use existing and new facilities (e.g., schools, community centers, Ka'ū Resource and Distance Learning Center, Ho'omalū Ka'ū, Honu'apo, Punalu'u) to offer place-based and distance education opportunities to adults.

5.9.4 Community-Based, Collaborative Actions

Community Action 18: Establish a charter school in Ocean View.

See Community Action 22 on page 86.



5.10 Expand Parks and Recreation Facilities

This section of the CDP prioritizes the Kahuku Park Community/Senior Center, Gym, and Shelter, a swimming facility in Nā'ālehu, skate and ATV parks, and the continual improvement of park facilities.

5.10.1 Community Objective

- Objective 7: **Identify viable sites for critical community infrastructure**, including water, emergency services and educational facilities to serve both youth and adults.

5.10.2 County Action

See Policy 22 on page 50, Policy 65 on page 62, Policy 88 on page 70, and Policy 113 on page 79.

Policy 125 Continually improve park facilities and services in Ka'ū, including fields, courts, playgrounds, lighting, restrooms, signage, and youth programs.

Policy 126 Acquire land surrounding Whittington Beach Park to allow for its expansion and the construction of a parking area. (GP 12.5.9.2(h))

Policy 127 Develop parks in Ocean View, commensurate with population growth. (GP 12.5.9.2(b))

Policy 128 Build a swimming facility in Nā'ālehu and Ocean View. (GP 12.5.9.2(a))

Policy 129 Collaborate with a “friends of the park” group to develop and manage an ATV track/course in an area of no ecological or cultural value.

Policy 130 Collaborate with a “friends of the park” group to develop and manage skate parks in Nā'ālehu and Ocean View.

5.10.3 Community-Based, Collaborative Actions

See Community Action 14 on page 70, Community Action 15 on page 73, and Community Action 16 on page 76.

Community Action 19: Collaborate with the County Department of Parks and Recreation to develop and manage an ATV track/ course in an area of no ecological or cultural value.

Community Action 20: Collaborate with the County Department of Parks and Recreation to develop and manage skate parks in Nā'ālehu and Ocean View.

See Community Action 29 on page 97.